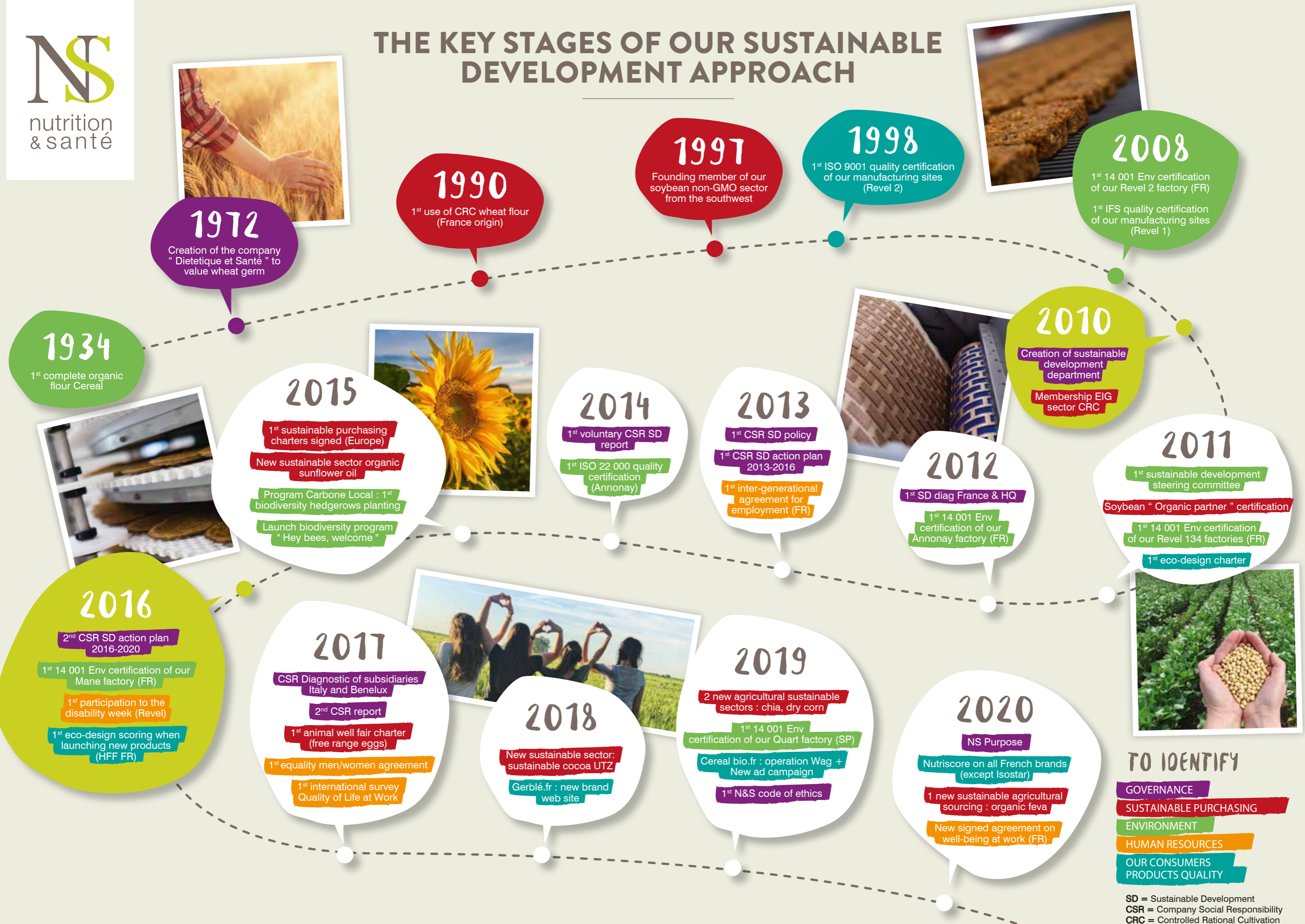


THE KEY STAGES OF OUR SUSTAINABLE DEVELOPMENT APPROACH



TO IDENTIFY

- GOVERNANCE
- SUSTAINABLE PURCHASING
- ENVIRONMENT
- HUMAN RESOURCES
- OUR CONSUMERS
- PRODUCTS QUALITY

SD = Sustainable Development
CSR = Company Social Responsibility
CRC = Controlled Rational Cultivation